



SAMPLE OF PROJECT REFERENCES

Own development, construction
and supply.



PROJECT OVERVIEW

Location: Kings Park, Long Island, NY,
United States

System Capacity: 5,97 MW

Product: 325 Wp Mono

Number of panels: 18.360

KINGS PARK – 5,97 MW

RECOM's acquisition of the Kings Park Solar Project in Long Island, NY, is part of RECOM's larger plan of expanding its presence and exposure in the United States. RECOM took full ownership of the project rights in mid. 2018, at the Ready-to-be-Built stage. Kings Park is a hamlet and census-designated location in the Town of Smithtown, Suffolk County, New York, on Long Island. The population was 17.282 as of the 2010 census. This 5.97 MW DC / 4MW AC power plant and has a 20-year power purchase agreement (PPA) with the Long Island Power Authority (LIPA).

The plant utilizes 18.360 RECOM 325 Wp Mono PV modules from RECOM's French production and 68 ABB Trio 60KW inverters.



PROJECT OVERVIEW

Location: Krakow Am See, Germany

System Capacity: 7,6 MW

Product: 275 Wp Mono

Number of panels: 26.520

KRAKOW – 7,6 MW

RECOM's Krakow am See PV plant is a 7,6MW DC facility. The plant is situated in the town of Krakow am See in Germany (depicted on the right). It operates with 275 Wp Mono RECOM modules.



PROJECT OVERVIEW

Location: Mecklenburg, Germany

System Capacity: 2,44 MW

Product: 275 Wp Mono

Number of panels: 9.000

GIELOW – 2,44 MW

RECOM's Gielow PV plant is a 2,44 MW DC facility. Gielow is a municipality in the Mecklenburgische Seenplatte district, in Mecklenburg-Vorpommern, Germany. The plant has a 20-year power purchase agreement (PPA). The off-takers are EWE Trading, an electricity wholesaler, along with the utility WEMAG, both investment grade.

Since July 2018, the Gielow solar plant utilizes 9.000 RECOM 275 Wp Mono PV modules. The plant provides average annual production of 2.012 MWh at an average performance ratio of 81,4%.

The project is financed (87%) by OSPA (OstseeSparkasse Rostock) Bank through a non-recourse loan.



PROJECT OVERVIEW

Location: Olean, NY, United States

System Capacity: 4,07 MW

Product: 345 Wp Mono

Number of panels: 11.808

HOMERIDAE – 4,07 MW

Homeridae is located in Olean which is a city in Cattaraugus County, New York, in the southeastern part of the county.

The project which takes up approximately 14.5 acres, is split in two parts, Homer Street East & West, each of a nominal capacity of 2,04 MW DC.

The project is in 75% ownership of RECOM and 25% of BQ Energy. The plant has a 25 years Power Purchase Agreement with the City of Olean. The project is one among four large solar projects with a total capacity of 28 MW RECOM is completing in NY State.

The project has a signed construction financing facility with New York Green Bank and a Sale & Leaseback off take with M&T Bank.



PROJECT OVERVIEW

Location: Lackawanna City, NY

United States

System Capacity: 8,9 MW

Product: 345 Wp Mono

Number of panels: 25.704

STEEL SUN – 8,9 MW

The project has a signed construction financing facility with New York Green Bank and a Sale & Leaseback off take with M&T Bank.



PROJECT OVERVIEW

Location: Pissouri, Cyprus

System Capacity: 1,5 MW

Product: 310Wp Mono

Number of panels: 4.838



PROJECT OVERVIEW

Location: Pissouri, Cyprus

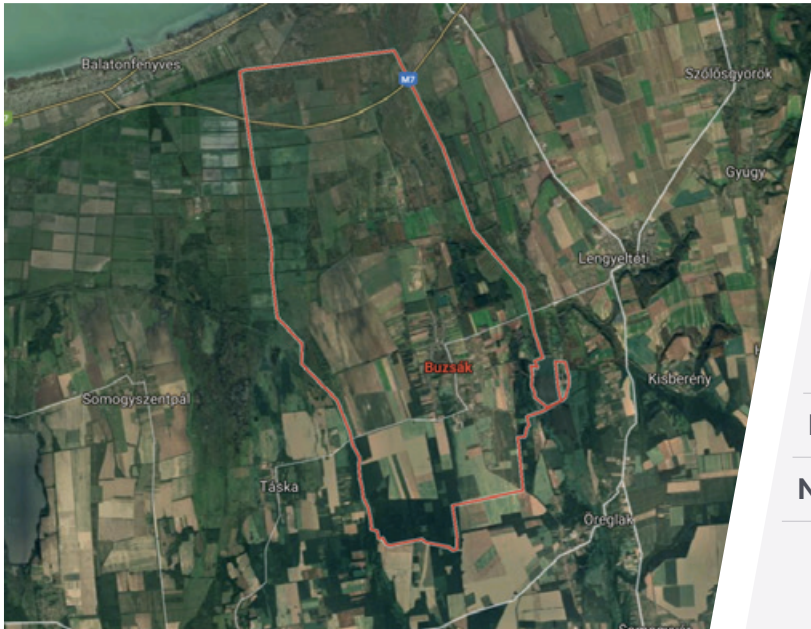
System Capacity: 3 MW

Product: 310Wp Mono

Number of panels: 9.676

PISSOURI – 1,5 & 3 MW

In January 2019, RECOM was awarded a turnkey EPC contract for the construction of two projects (1,5 & 3MWp) in Cyprus. The projects will be utilizing a total of 14.514 RECOM 310Wp Mono panels which are installed on fixed ground mounted structures.



PROJECT OVERVIEW

Location: Buzsák, Hungary

System Capacity: 76,6 MW

Product: 330Wp Mono

Number of panels: 232.122

BUZSAK – 76,6 MW

The Buzsák solar field portfolio consists of 126 projects all together. Each project within the portfolio consists of 1,843 pieces of 330 WP RECOM Monocrystalline Modules and 8 ABB inverters TRIO 60KTL. The projects are expanding on an impressive 147 Hectares area.

This is one of the biggest solar field developed in Hungary and will contribute to serving the southern-west part of Hungary with green energy. The total output of the project portfolio is 86.436.000 kWh per year, which is equivalent to 67.377 tons of carbon dioxide. Expected completion date: Q2 2021.

OLESHKY - 41,76 MW



PROJECT OVERVIEW

Location: Oleshky, Ukraine

EPC: Podilskiy Energoconsulting (KNESS)

System Capacity: 41,76 MW

Product: 270 Wp Poly

Number of panels: 80.586

MATTAPOISET - 21 MW



PROJECT OVERVIEW

Location: Massachusetts, USA

EPC: NRG

System Capacity: 21 MW



RECOM Headquarters, Offices & Factories

GERMANY	USA	SINGAPORE	SOUTH KOREA	FRANCE (FACTORY)	ITALY (FACTORY)	GREECE	CYPRUS
Speditionstraße 21 Düsseldorf 40221 Germany info@recom-solar.com T: +49 211546922291	580 California Str. 12th & 16th Floors, 4925 San Francisco info@recom-solar.com T: +1 4156591873	Level 39, Tower 2 Marina Bay Financial Centre 10 Marina Boulevard 018983 Singapore info@recom-solar.com T: +65 68186030	37-1, Geonji-ro 153 beon-gil Seo-gu, Incheon 22774 Korea info@recom-solar.com T: +357 22282416	4 Avenue Pierre Marzin 22303 Lannion France contact@recom-sillia.com T: +33 0296058050	Via dell' Artigianato, Z. I., Vanzo di San Pietro Viminario, PD 35020 Italy info@recom-solar.com	1 Poseidonos Str. 17342, Ag. Dimitrios Athens Greece info@recom-solar.com T: +30 2182189858	18 Kyriakou Matsi Str. 2nd Floor, 2408 Egkomi Nicosia Cyprus info@recom-solar.com T: +357 22282416

www.recom-solar.com